



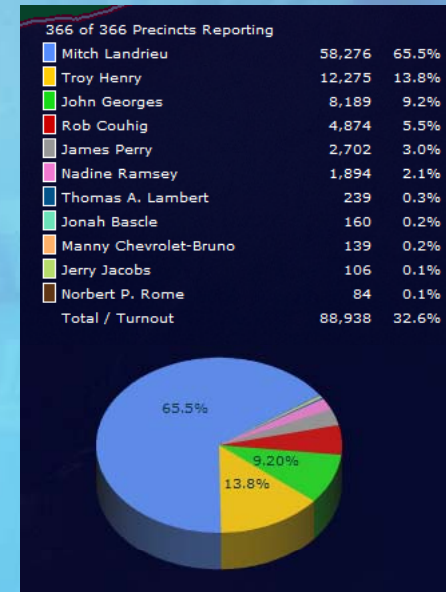
Mitch Landrieu

Mayor Elect of the City of New Orleans

February 6, 2010

Mitch Landrieu Elected!

- Mitch Landrieu wins with broad community support
 - Receives 65.5% of all votes cast
 - 69.8% of the White vote
 - 62.8% of the African American vote
 - Wins 366 of 367 precincts
 - African American vote accounted for 53.5% of all votes cast and over 51% of Landrieu's vote
- Landrieu's support was solid from both a demographic and geographic perspective – an impressive victory



Landrieu Elected with 65.5% of the Vote



Done

Internet | Protected Mode: Off

100%

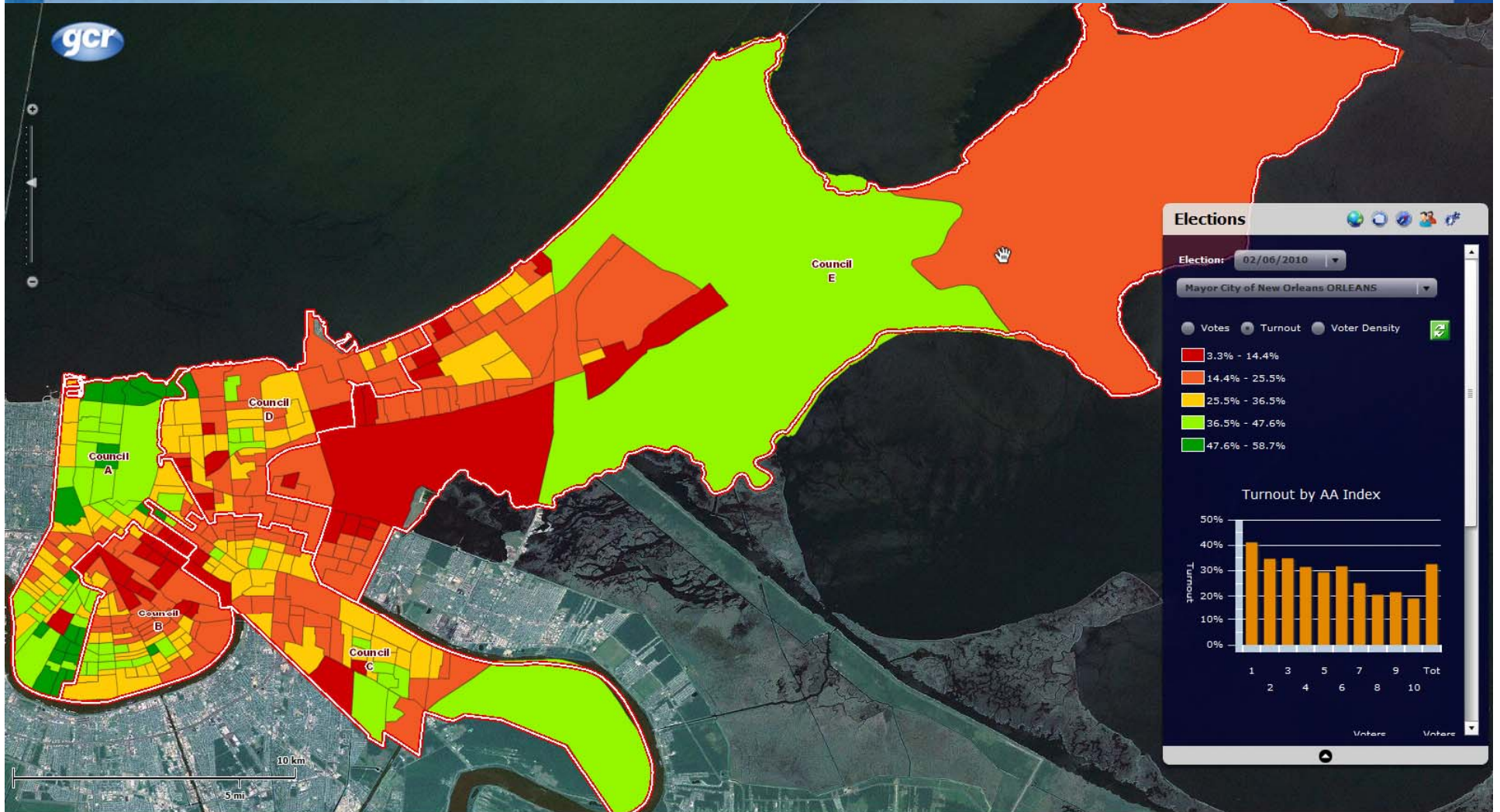
Post Election Analysis

- Mitch Landrieu enjoyed broad community support
- Correlating “Early” and Election Day voting demonstrates that all segments of the community supported Landrieu

	White	African American	Other Races	Total
Election Day Turnout	38.0%	21.3%	19.9%	
Votes Cast Election Day	31,858	36,015	3,903	71,777
Early Votes Cast	5,012	11,561	588	17,161
Total Votes Cast	36,870	47,576	4,491	88,938
Resulting Turnou	44.0	28.2	22.9	32.7%
Percent of Votes Cast by Race	41.5%	53.5%	5.1%	
Estimated Percent for Landrieu	69.8%	62.6%	62.0%	
Resulting Votes for Landrieu	25,717	29,774	2,785	58,276
Source of Landrieu Vote by Race	44.1%	51.1%	4.8%	100.0%

Computed based upon a model and analysis of precinct level data of both Early and Election Day voting

Voter Turnout On Election Day



Done

Internet | Protected Mode: Off

100%

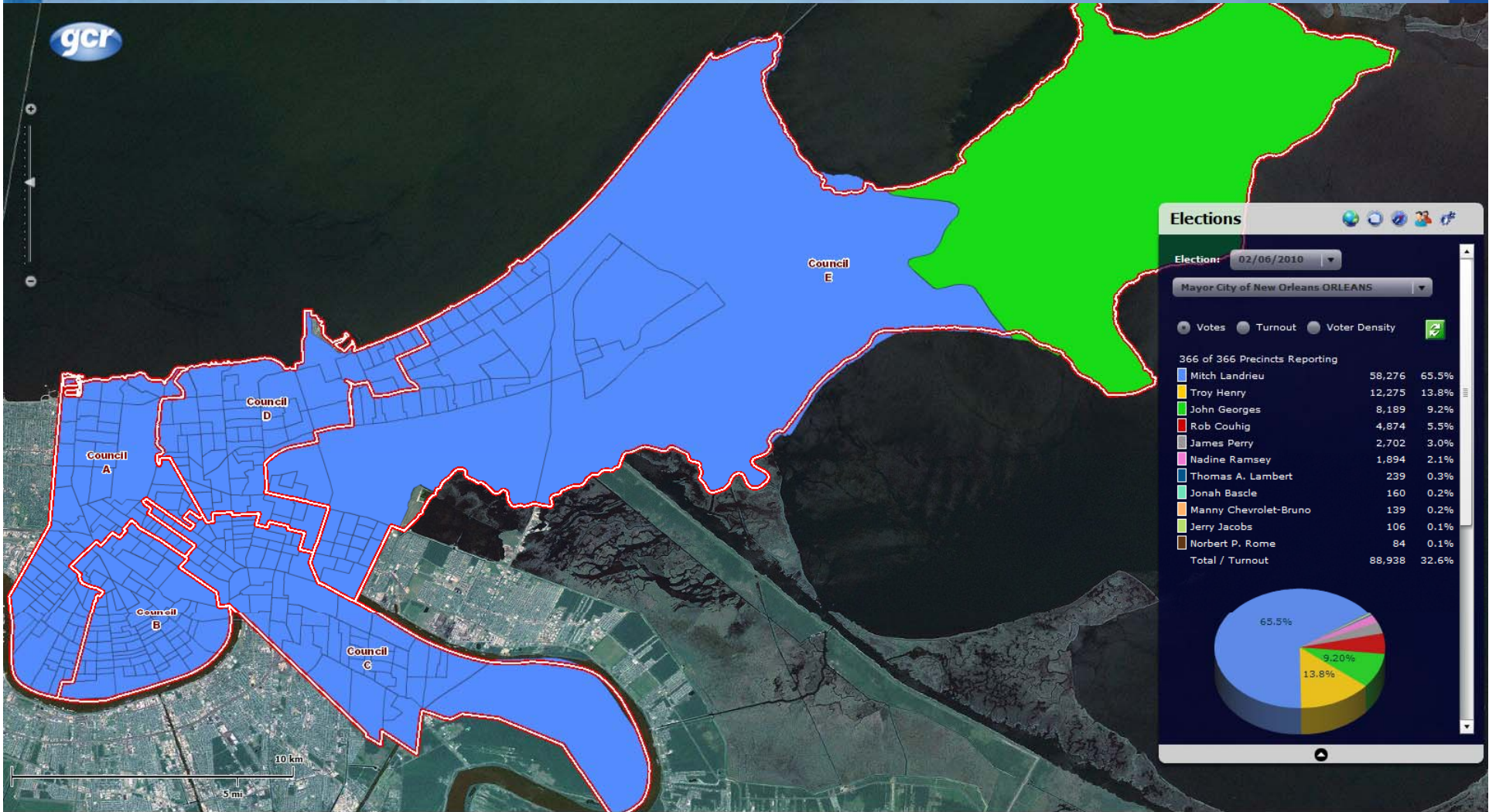


Summary Results by AA_Index

February 6, 2010 - Mayor City of New Orleans ORLEANS

	<i>Profile of Registered Voters</i>							<i>Votes Cast</i>	<i>Turn Out</i>	Mitch Landrieu		Troy Henry		John Georges		Rob Couhig		Others	
	<i>Total</i>	<i>White</i>	<i>Black</i>	<i>Other</i>	<i>Demo</i>	<i>Rep.</i>	<i>Ind.</i>												
Absentee								16,994		10,950	64.4%	3,177	18.7%	1,223	7.2%	661	3.9%	983	5.8%
AA Index 1 (0-10%)	40,519	86.4%	4.2%	9.4%	40.0%	31.6%	28.4%	16,660	41.12%	11,544	69.3%	228	1.4%	2,370	14.2%	1,982	11.9%	536	3.2%
AA Index 2 (11-20%)	15,476	74.4%	14.6%	11.0%	47.8%	20.9%	31.3%	5,362	34.65%	3,869	72.2%	175	3.3%	560	10.4%	487	9.1%	271	5.1%
AA Index 3 (21-30%)	14,381	63.1%	26.1%	10.8%	51.1%	20.9%	28.1%	5,006	34.81%	3,322	66.4%	336	6.7%	572	11.4%	485	9.7%	291	5.8%
AA Index 4 (31-40%)	10,408	50.5%	35.2%	14.3%	55.7%	14.6%	29.7%	3,271	31.43%	2,224	68.0%	258	7.9%	337	10.3%	229	7.0%	223	6.8%
AA Index 5 (41-50%)	15,130	44.0%	44.8%	11.2%	59.5%	13.7%	26.8%	4,433	29.30%	2,865	64.6%	442	10.0%	514	11.6%	319	7.2%	293	6.6%
AA Index 6 (51-60%)	9,025	35.7%	54.2%	10.1%	65.1%	11.3%	23.5%	2,864	31.73%	1,874	65.4%	363	12.7%	264	9.2%	158	5.5%	205	7.2%
AA Index 7 (61-70%)	11,841	26.0%	63.2%	10.8%	68.3%	7.6%	24.1%	2,968	25.07%	1,954	65.8%	403	13.6%	240	8.1%	103	3.5%	268	9.0%
AA Index 8 (71-80%)	25,005	16.8%	76.2%	7.1%	72.2%	6.4%	21.5%	5,116	20.46%	3,243	63.4%	896	17.5%	423	8.3%	163	3.2%	391	7.6%
AA Index 9 (81-90%)	51,537	8.7%	86.0%	5.3%	78.6%	4.1%	17.3%	11,098	21.53%	6,986	62.9%	2,383	21.5%	778	7.0%	153	1.4%	798	7.2%
AA Index 10 (91-100%)	79,889	2.6%	93.8%	3.6%	80.7%	3.0%	16.3%	15,166	18.98%	9,445	62.3%	3,614	23.8%	908	6.0%	134	0.9%	1,065	7.0%
TOTAL	273,211	30.97%	61.80%	7.23%	66.90%	11.22%	21.88%	88,938	32.55%	58,276	65.52%	12,275	13.80%	8,189	9.21%	4,874	5.48%	5,324	5.99%

Council Districts



Done

Internet | Protected Mode: Off

100%





Summary Results by Council District

February 6, 2010 - Mayor City of New Orleans ORLEANS

	<i>Profile of Registered Voters</i>							<i>Votes Cast</i>	<i>Turn Out</i>	Mitch Landrieu		Troy Henry		John Georges		Rob Couhig		Others	
	<i>Total</i>	<i>White</i>	<i>Black</i>	<i>Other</i>	<i>Demo</i>	<i>Rep.</i>	<i>Ind.</i>												
Absentee								16,994		10,950	64.4%	3,177	18.7%	1,223	7.2%	661	3.9%	983	5.8%
Council District - A	61,447	59.4%	32.3%	8.2%	53.6%	20.9%	25.5%	21,562	35.09%	14,846	68.9%	1,147	5.3%	2,594	12.0%	1,985	9.2%	990	4.6%
Council District - B	53,987	37.4%	55.1%	7.5%	63.6%	11.4%	25.0%	13,618	25.22%	9,364	68.8%	1,332	9.8%	1,264	9.3%	750	5.5%	908	6.7%
Council District - C	59,727	32.5%	59.6%	7.9%	65.0%	11.3%	23.6%	15,397	25.78%	9,727	63.2%	2,017	13.1%	1,567	10.2%	1,011	6.6%	1,075	7.0%
Council District - D	51,101	11.4%	84.4%	4.3%	78.8%	5.3%	15.9%	12,250	23.97%	7,865	64.2%	2,462	20.1%	847	6.9%	322	2.6%	754	6.2%
Council District - E	46,949	5.7%	86.3%	8.0%	77.4%	4.7%	17.9%	9,117	19.42%	5,524	60.6%	2,140	23.5%	694	7.6%	145	1.6%	614	6.7%
TOTAL	273,211	30.97%	61.80%	7.23%	66.90%	11.22%	21.88%	88,938	32.55%	58,276	65.52%	12,275	13.80%	8,189	9.21%	4,874	5.48%	5,324	5.99%

Senate Districts





Summary Results by Senate District

February 6, 2010 - Mayor City of New Orleans ORLEANS

	<i>Profile of Registered Voters</i>							<i>Votes Cast</i>	<i>Turn Out</i>	<i>Mitch Landrieu</i>		<i>Troy Henry</i>		<i>John Georges</i>		<i>Rob Couhig</i>		<i>Others</i>	
	<i>Total</i>	<i>White</i>	<i>Black</i>	<i>Other</i>	<i>Demo</i>	<i>Rep.</i>	<i>Ind.</i>												
Absentee								16,994		10,950	64.4%	3,177	18.7%	1,223	7.2%	661	3.9%	983	5.8%
Senate District - 01	184	92.9%	1.1%	6.0%	42.9%	29.3%	27.7%	31	16.85%	11	35.5%	1	3.2%	12	38.7%	5	16.1%	2	6.5%
Senate District - 02	53,685	5.8%	86.8%	7.5%	78.0%	4.5%	17.5%	10,625	19.79%	6,471	60.9%	2,513	23.7%	788	7.4%	160	1.5%	693	6.5%
Senate District - 03	43,659	24.0%	70.4%	5.7%	72.5%	8.0%	19.5%	11,266	25.80%	7,466	66.3%	1,653	14.7%	931	8.3%	449	4.0%	767	6.8%
Senate District - 04	60,933	35.2%	58.7%	6.1%	65.7%	12.6%	21.7%	17,354	28.48%	11,564	66.6%	1,834	10.6%	1,842	10.6%	1,154	6.6%	960	5.5%
Senate District - 05	63,156	39.5%	52.8%	7.7%	62.9%	11.7%	25.3%	16,866	26.71%	11,621	68.9%	1,591	9.4%	1,568	9.3%	956	5.7%	1,130	6.7%
Senate District - 06	17,320	82.2%	6.7%	11.2%	43.0%	27.2%	29.8%	6,656	38.43%	4,829	72.6%	99	1.5%	743	11.2%	701	10.5%	284	4.3%
Senate District - 07	34,274	30.0%	62.0%	7.9%	64.0%	14.3%	21.7%	9,146	26.68%	5,364	58.6%	1,407	15.4%	1,082	11.8%	788	8.6%	505	5.5%
TOTAL	273,211	30.97%	61.80%	7.23%	66.90%	11.22%	21.88%	88,938	32.55%	58,276	65.52%	12,275	13.80%	8,189	9.21%	4,874	5.48%	5,324	5.99%

House Districts



Done

Internet | Protected Mode: Off

100%



Summary Results by House District

February 6, 2010 - Mayor City of New Orleans ORLEANS

	<i>Profile of Registered Voters</i>							<i>Votes Cast</i>	<i>Turn Out</i>	<i>Mitch Landrieu</i>		<i>Troy Henry</i>		<i>John Georges</i>		<i>Rob Couhig</i>		<i>Others</i>	
	<i>Total</i>	<i>White</i>	<i>Black</i>	<i>Other</i>	<i>Demo</i>	<i>Rep.</i>	<i>Ind.</i>												
Absentee								16,994		10,950	64.4%	3,177	18.7%	1,223	7.2%	661	3.9%	983	5.8%
House District - 082	2,108	66.4%	22.7%	11.0%	51.7%	16.4%	31.9%	781	37.05%	569	72.9%	26	3.3%	90	11.5%	54	6.9%	42	5.4%
House District - 086	10,785	44.8%	45.6%	9.7%	54.0%	23.0%	23.0%	3,455	32.04%	2,108	61.0%	384	11.1%	421	12.2%	411	11.9%	131	3.8%
House District - 091	24,290	41.8%	51.0%	7.2%	63.1%	11.7%	25.1%	7,263	29.90%	5,053	69.6%	671	9.2%	642	8.8%	411	5.7%	486	6.7%
House District - 093	25,841	40.0%	51.6%	8.4%	61.6%	12.2%	26.2%	5,974	23.12%	4,118	68.9%	518	8.7%	578	9.7%	344	5.8%	416	7.0%
House District - 094	24,343	77.3%	14.3%	8.4%	44.7%	29.4%	25.9%	10,124	41.59%	6,767	66.8%	281	2.8%	1,541	15.2%	1,187	11.7%	348	3.4%
House District - 095	26,619	41.1%	50.1%	8.7%	63.2%	11.8%	25.0%	7,364	27.66%	5,018	68.1%	743	10.1%	688	9.3%	413	5.6%	502	6.8%
House District - 096	22,418	21.3%	72.9%	5.8%	74.2%	5.2%	20.6%	5,442	24.28%	3,735	68.6%	819	15.0%	352	6.5%	132	2.4%	404	7.4%
House District - 097	22,718	14.7%	80.8%	4.6%	78.0%	5.5%	16.6%	5,993	26.38%	3,890	64.9%	1,132	18.9%	396	6.6%	160	2.7%	415	6.9%
House District - 098	21,736	41.7%	51.9%	6.5%	60.4%	16.4%	23.2%	6,267	28.83%	4,426	70.6%	451	7.2%	595	9.5%	508	8.1%	287	4.6%
House District - 099	19,122	9.7%	86.0%	4.3%	78.0%	3.6%	18.4%	3,517	18.39%	2,229	63.4%	731	20.8%	191	5.4%	42	1.2%	324	9.2%
House District - 100	23,042	5.6%	89.4%	5.0%	80.8%	3.8%	15.4%	5,000	21.70%	3,095	61.9%	1,222	24.4%	332	6.6%	48	1.0%	303	6.1%
House District - 101	19,885	5.7%	90.6%	3.7%	81.1%	3.2%	15.6%	3,528	17.74%	2,178	61.7%	875	24.8%	217	6.2%	34	1.0%	224	6.3%
House District - 102	24,457	24.2%	68.7%	7.1%	68.2%	10.5%	21.3%	5,926	24.23%	3,402	57.4%	1,053	17.8%	690	11.6%	390	6.6%	391	6.6%
House District - 103	5,847	13.8%	52.1%	34.1%	52.2%	14.0%	33.7%	1,310	22.40%	738	56.3%	192	14.7%	233	17.8%	79	6.0%	68	5.2%
TOTAL	273,211	30.97%	61.80%	7.23%	66.90%	11.22%	21.88%	88,938	32.55%	58,276	65.52%	12,275	13.80%	8,189	9.21%	4,874	5.48%	5,324	5.99%



2021 Lakeshore Drive, Ste. 500 | New Orleans, LA 70122

P: [504-304-2500](tel:504-304-2500) | F: 504-304-2525

www.gcrConsulting.com